

*This frame is only for use with a 100x148mm 3D decoupage.

What is a 3D Decoupage?

3D decoupage is a piece of work made with 4 to 10 pictures/print cards of the same kind by cutting out each element and layering them on top of each other to create a three-dimensional picture with more volume. This craft, originated in Europe and perfected in America, will serve as a lovely decoration if you set it in a frame that has depth.



Warning: This craft requires the use of adhesives, scissors and other utensils which could be dangerous to small children. Please be sure to keep them away from children while you work.

Assembly

You will need: Scissors, glue, ruler, a used ball-point pen

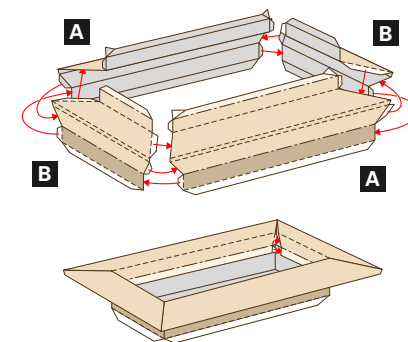
Assembly tip: Tracing along fold lines using a ruler and a dried-up pen will make folding easier, and result in sharper folds.

Notation Key: - - - - - Mountain fold - · - - - - Valley fold ——— Cut line
● Glue ● Glue reverse side

Assembly Instructions

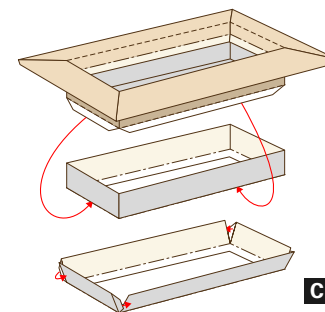
1. Assemble the frame.

Attach each glue spot in turn, starting with the largest. Attach them one at a time, carefully and firmly.



2. Assemble the inner box.

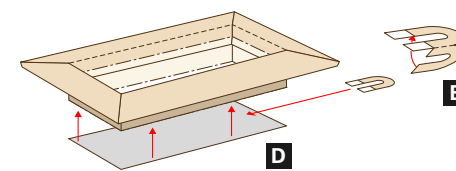
If you attach the 3D decoupage first it will make assembly difficult, so do not attach it yet.



3. Attach the base and the hanger, and your frame is complete.

Using the mark in the center as a guide, attach the hanger according to which way you want the 3D decoupage to hang (vertically or horizontally).

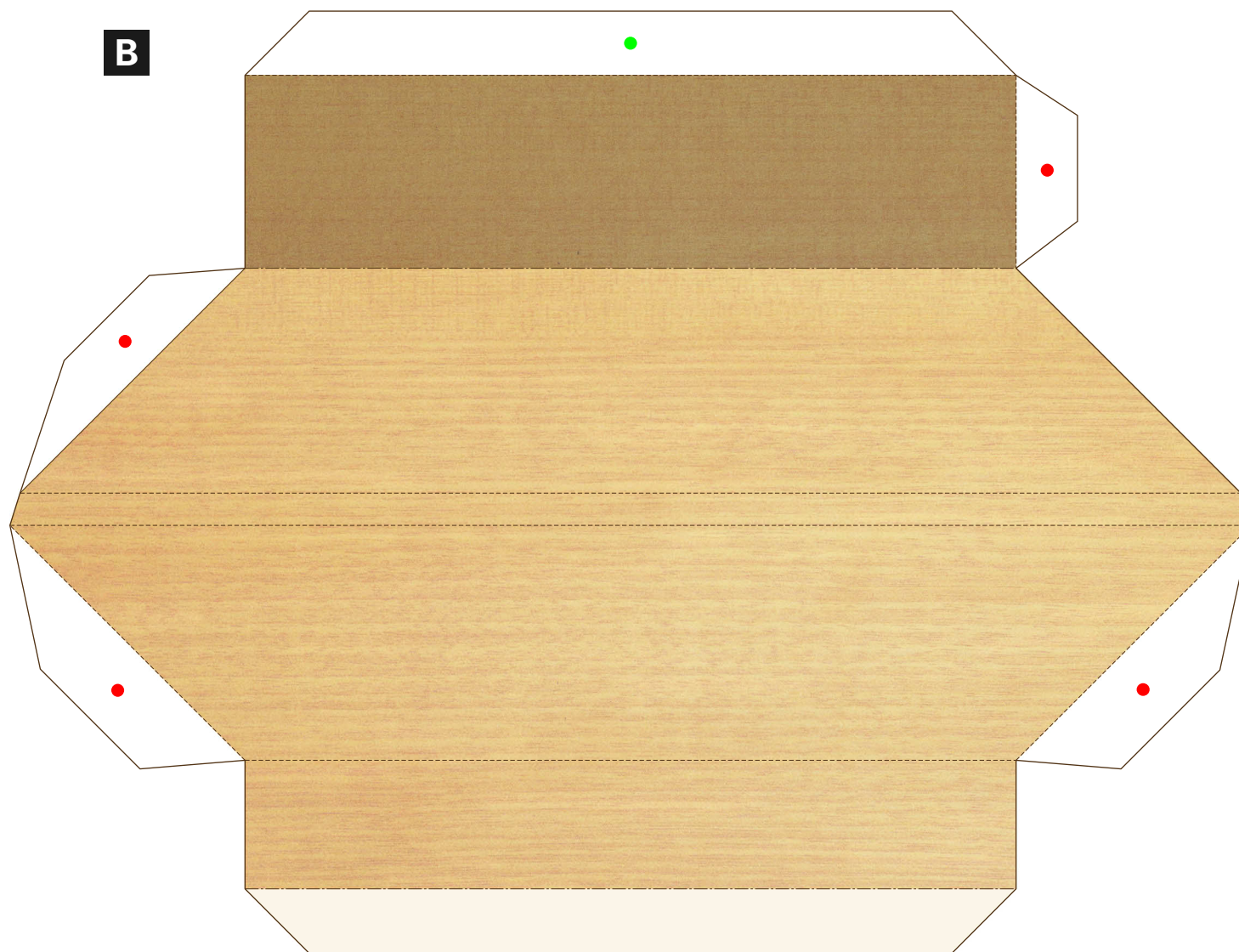
*This step may be skipped if you do not want a hanger.

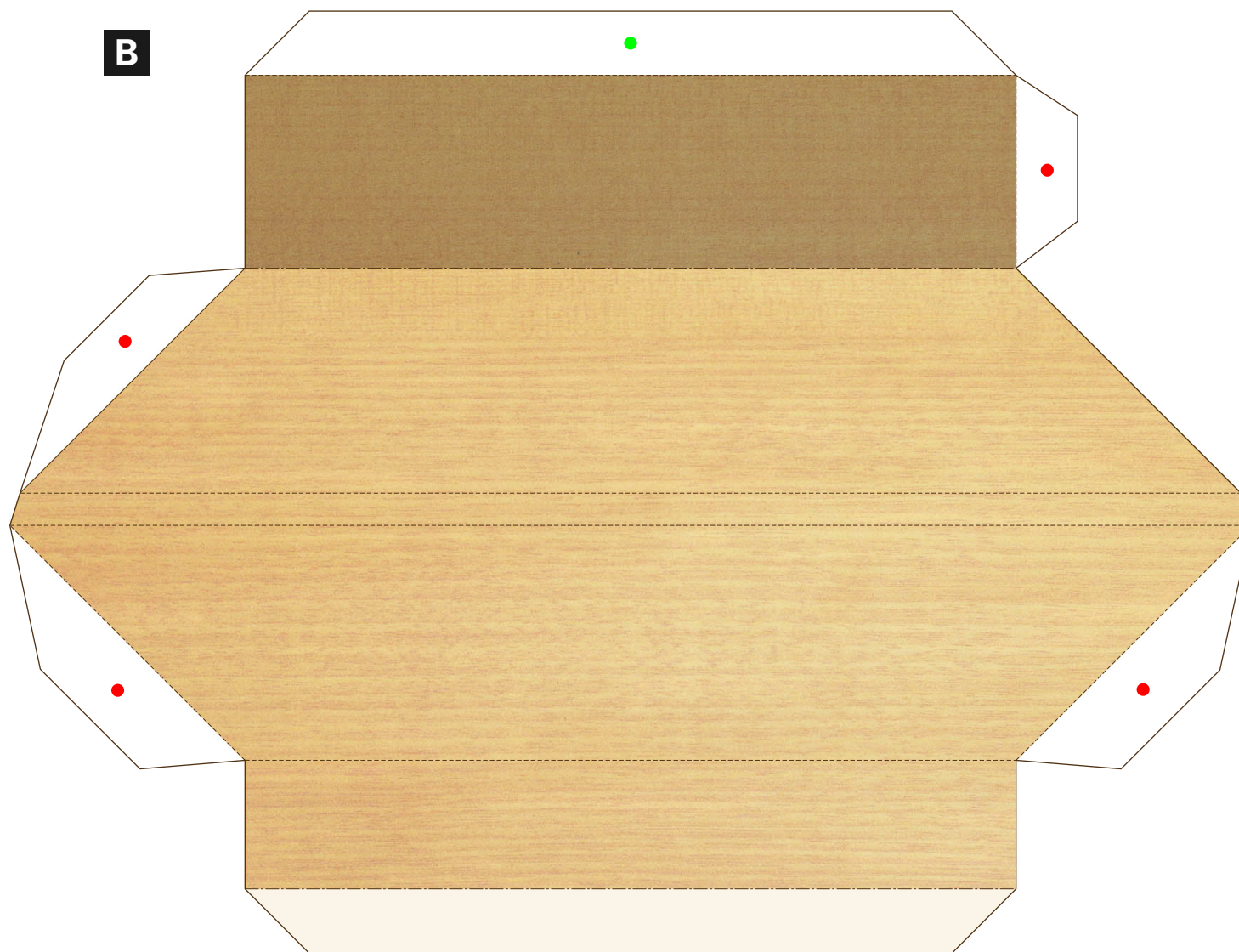


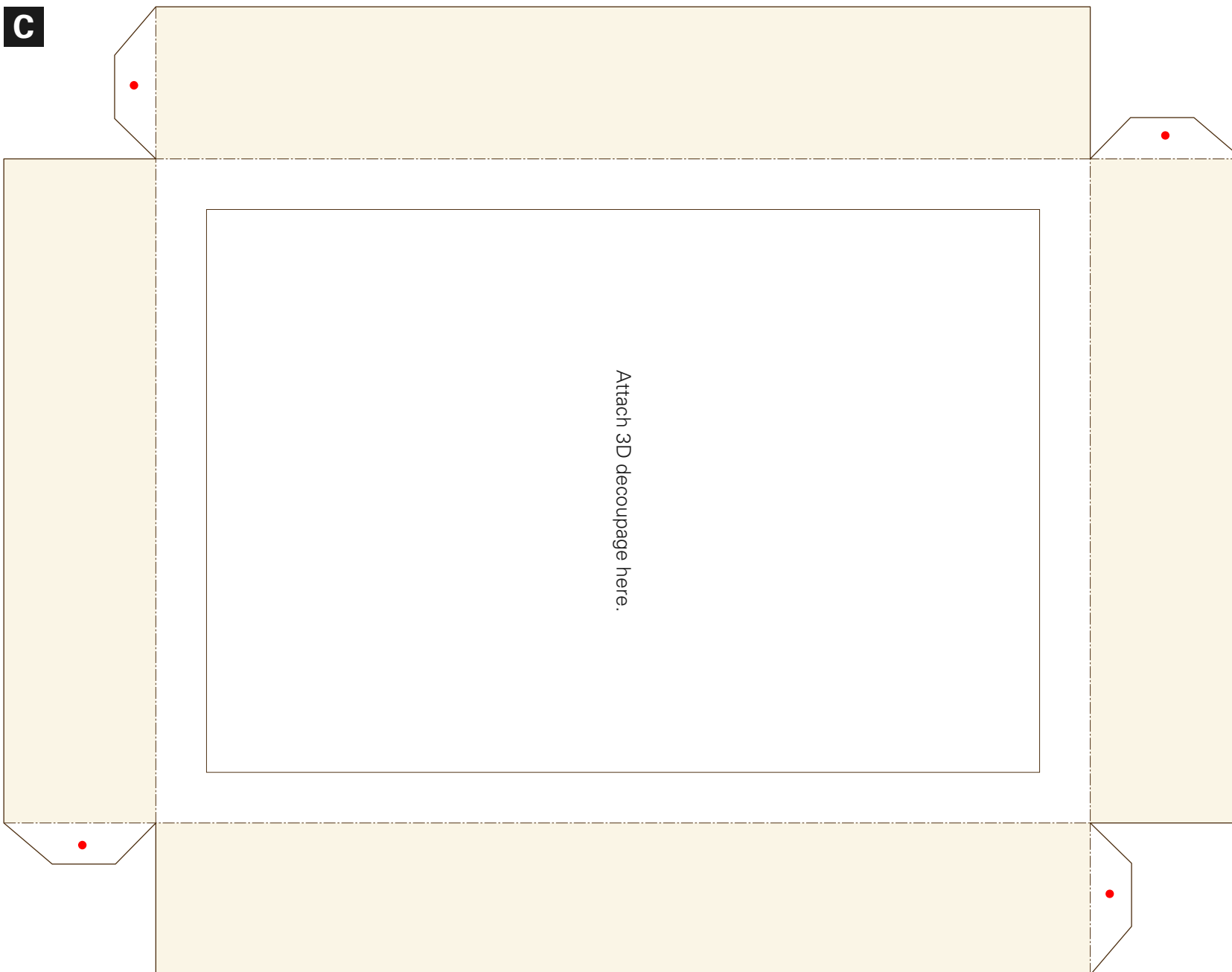
Attach the 3D decoupage of your choice to the lining.



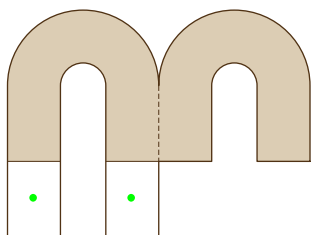








E



D

